

Mr. Brox's Recorder Karate

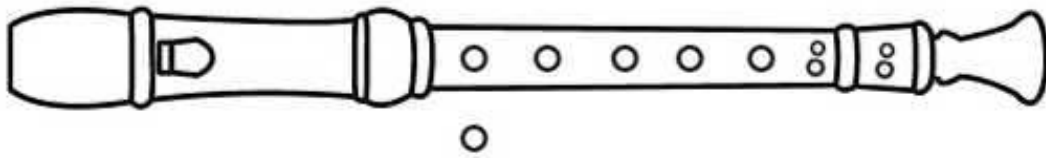
Book 1

Compiled and Edited by

Adam Brox

Copyright 2006, Adam D. Brox Designs

Recorder Fingering Chart



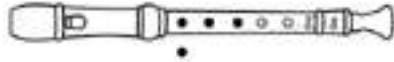
Three staves of musical notation with corresponding fingering diagrams. Each staff shows a sequence of notes with their respective fingerings indicated by solid black dots (fingered) and open circles (unfingered).

Staff 1: Notes: C4, D4, E4, F4, G4, A4, B4, C5. Fingerings: 1, 1, 1, 1, 1, 1, 1, 1.

Staff 2: Notes: C4, B3, A3, G3, F3, E3, D3, C3. Fingerings: 1, 1, 1, 1, 1, 1, 1, 1.

Staff 3: Notes: C4, D4, E4, F4, G4, A4, B4, C5, D5. Fingerings: 1, 1, 1, 1, 1, 1, 1, 1, 1.

New Note: G



New Note Value: Whole Note and Whole Rest - 4 beats each

1.

2.

New Note Value: **Half Note - 2 beats each**

3.

New Note Value: **Quarter Note - 1 beat each**

4.

Repeat Sign:
Go back to either the first bar, or to the last repeat sign

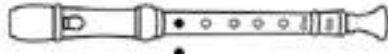
Time Signature:
Tells you how many beats are in a bar (top number) and what note value gets the beat (bottom number)

To determine the note value, use the following chart:

- 1 = whole note**
- 2 = half note**
- 4 = quarter note**
- 8 = eighth note**

White Belt Test

New Note: **B**



1.

New Symbol: **End Barline** - stop when you see this symbol!

2.

Hot Cross Buns

3.

Broken Hot Cross Buns

New Note Value: **Quarter Rest - 1 beat each**

4.

Mary Had A Little Lamb

5.

New Symbol: **Breath Mark** ♪ take a *quick* breath and then go on

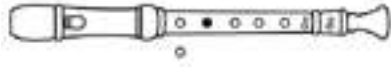
Orange Belt Test - Gently Sleep

Traditional lyrics by Barb Philpak

Gent - ly sleep, my sweet child. Gent - ly sleep, with that smile.

Gent - ly sleep, lit - tle one. Gent - ly sleep day is done.

New Note: D¹



1.

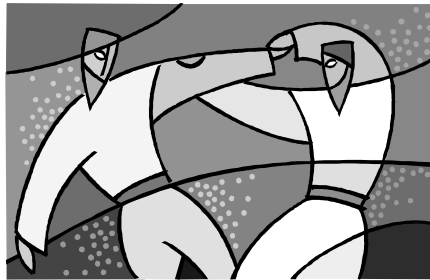
Working Your Way Up

2.

Norwegian Dance

Scandinavian Folk Tune

3.



Blue Belt Test - Lightly Row

Old German Folk Tune

Lightly row, lightly row o'er the shining waves we go; Lightly row lightly row on the si-lent tide.

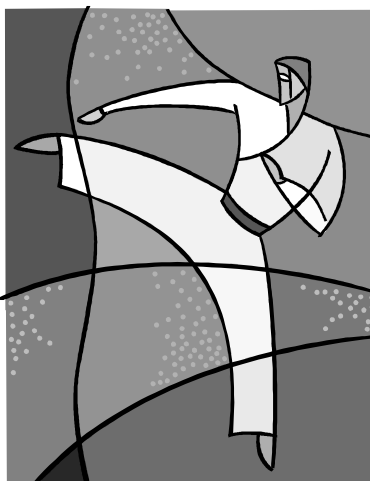
Let the winds and waters be; Still and calm and clear to see! Lightly row, lightly row, on the si-lent tide.

New Note: **C#**¹



New Musical Symbols: **Sharp** # and **Natural** ♮

These are known as accidentals. The Sharp sign raises the note by half (as in **C** to **C#**, the note between C and D), and the Natural sign lowers the note back to its original state



Black Belt Test - Ode To Joy

Ludwig van Beethoven

